

LGMA: Housing Delivery Co-Ordination Office

Active Land Management

Housing SPC

13.03.2024



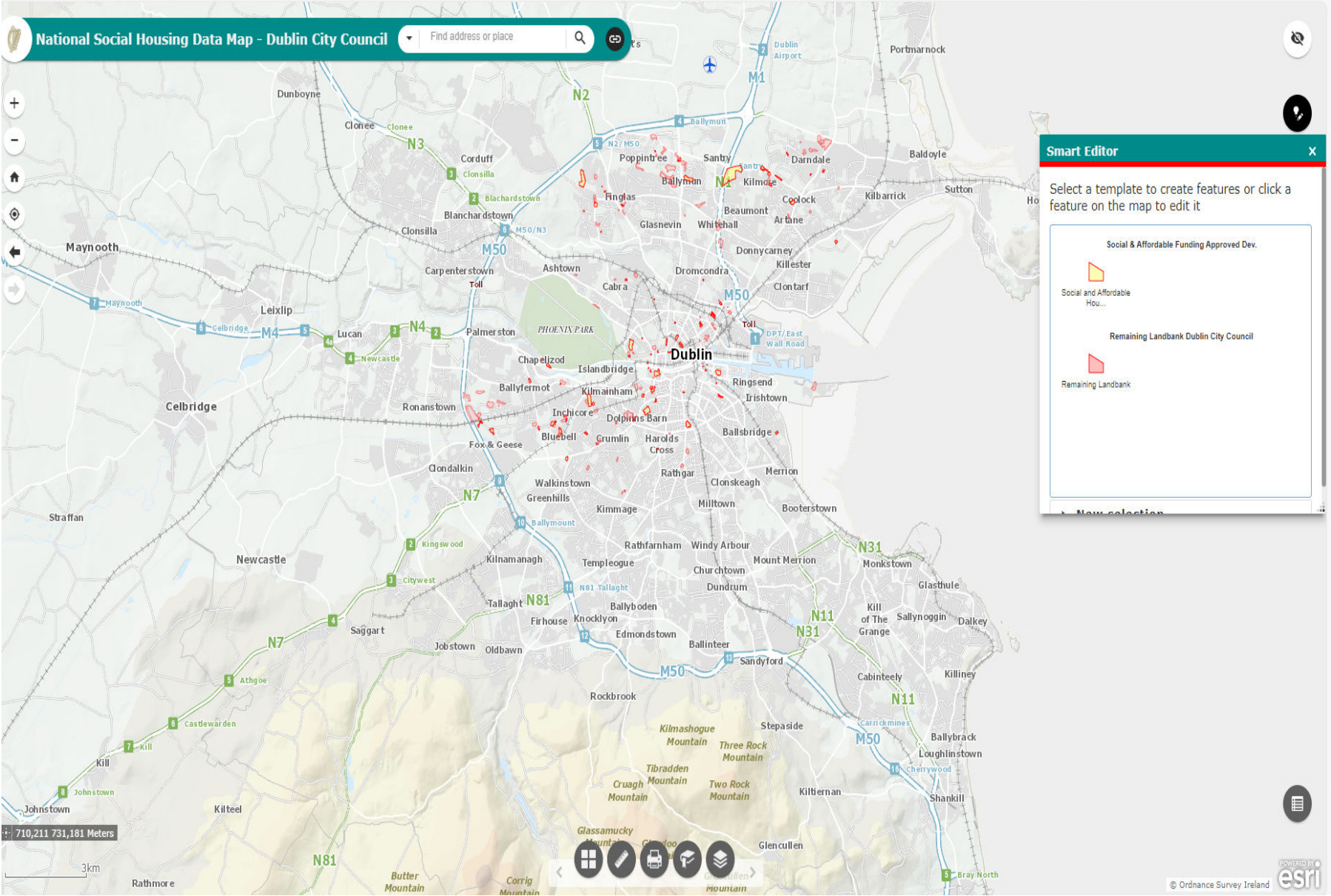
Comhairle Cathrach
Bhaile Átha Cliath
Dublin City Council

Introduction:

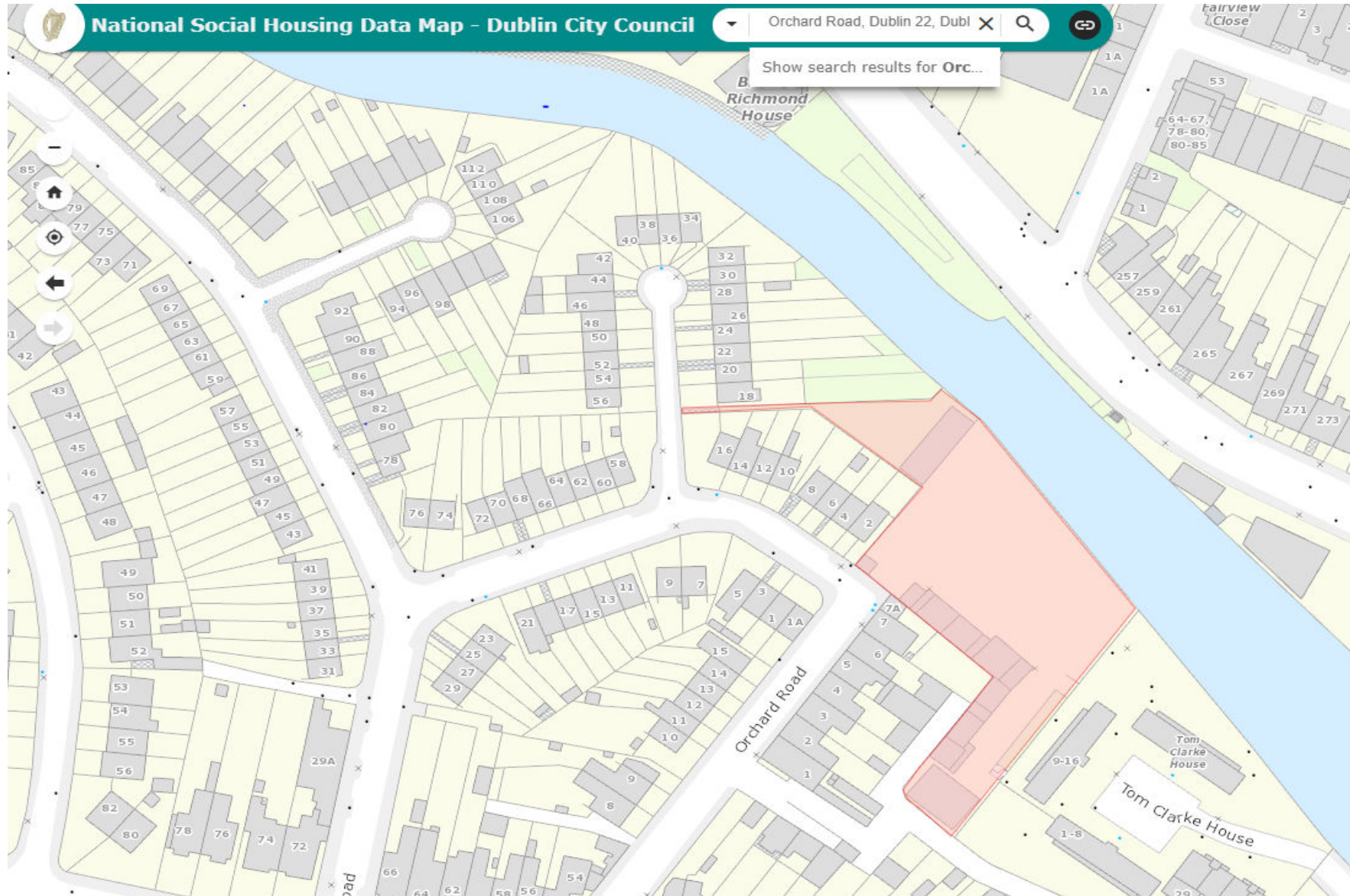
- Under Housing for All Dublin City Council has been tasked with delivering 12,666 social and affordable homes by 2026
- Planning and Housing Departments are working with LGMA on feeding into a national GIS/mapping system
- The map will illustrate remaining landbanks suitable for housing and the social and affordable housing schemes that have received funding
- Department of Housing are also provided with the figures



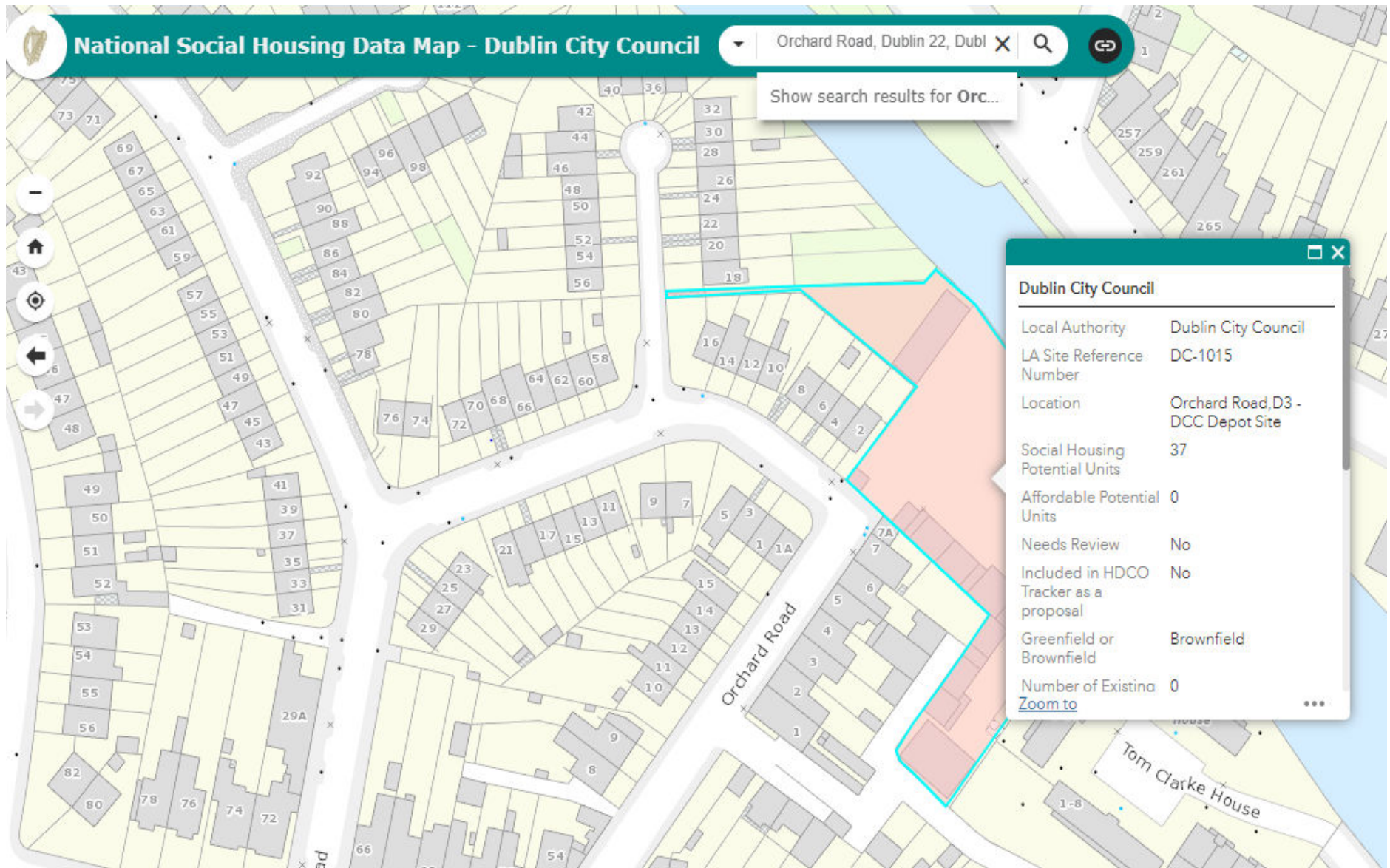
National Social Housing Data Map-DCC:



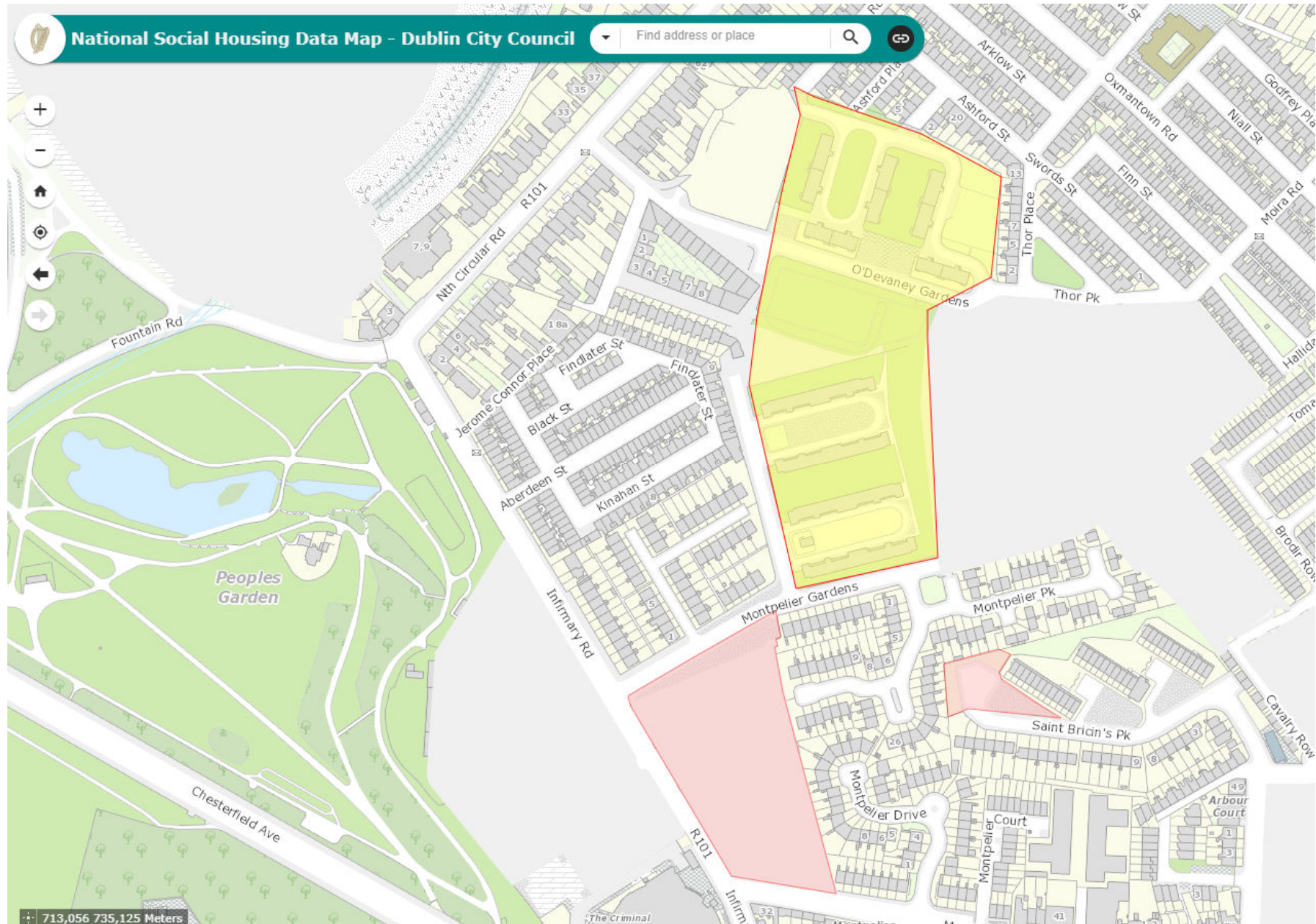
Red Sites-Land for Social and Affordable Housing:



Data Fields for Social and Affordable Housing:



Yellow Sites-Approved Social and Affordable Housing:

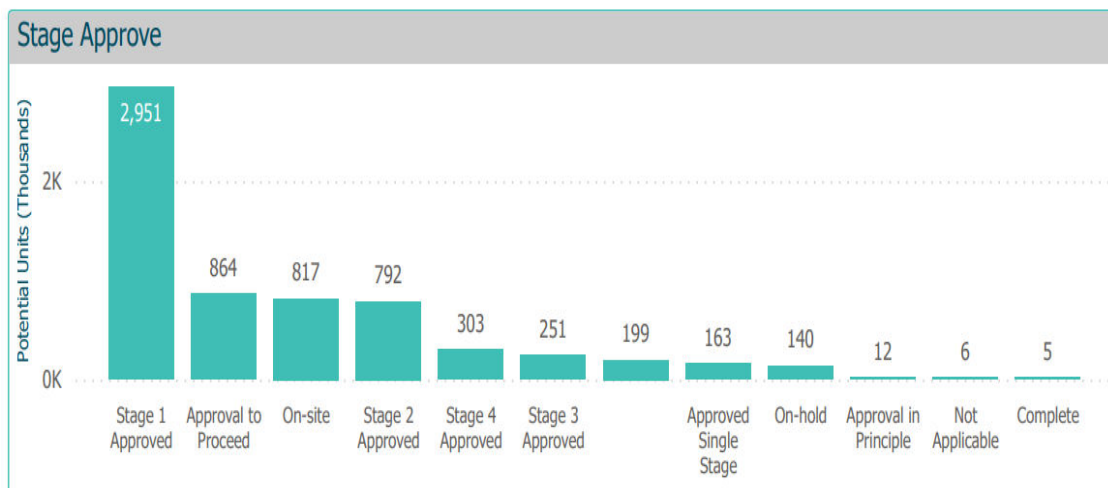
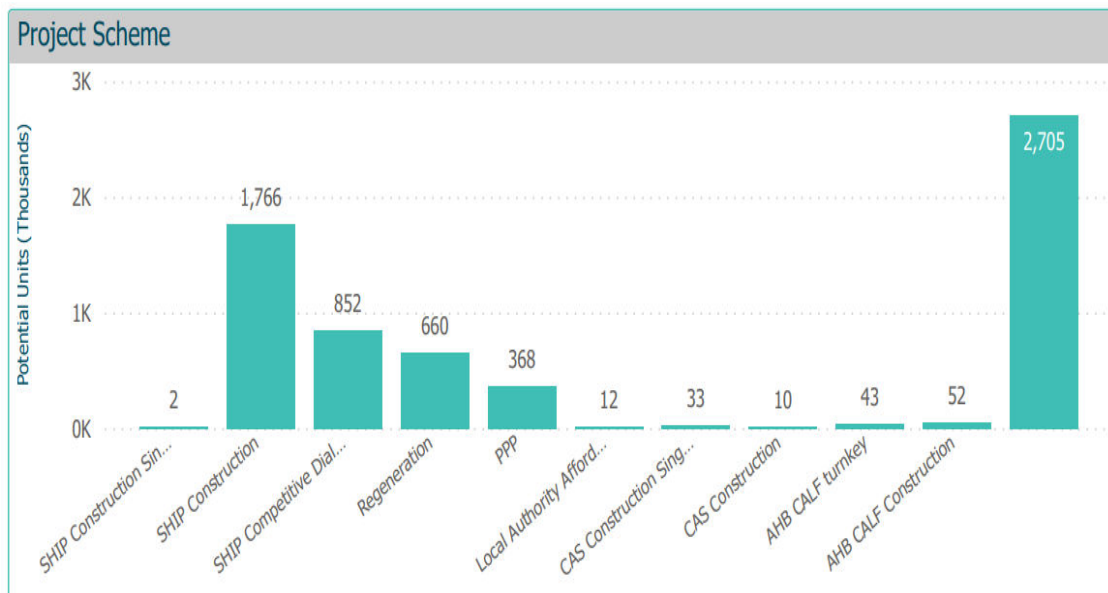


Data Fields for Approved Social and Affordable Housing:

The image shows a screenshot of the National Social Housing Data Map for Dublin City Council. The map displays various housing units and streets, including Findlater Street, Black Street, Kinahan Street, and a Sports Ground. A data popup window is open over the O'Devaney Gardens area, providing the following information:

O'Devaney Gardens, Dublin 1	
Local Authority	Dublin City Council
Tenure Type	Social
Project Scheme	SHIP CONSTRUCTION
Mixed Tenure	Yes
Department Reference (Social Housing)	N29-1-11
Department Reference (Affordable Housing)	
Project Name	O'Devaney Gardens, Dublin 1
Project Phase	1-4
Location	O'Devaney Gardens, Dublin 1
Zoom to	...

TRABIS-LASA Reporting System (example):



- Analysis of the yellow sites (i.e. the approved social and affordable housing schemes)
- Illustrates the breakdown by project scheme and stage approved

Data extracted from TRABIS on 03/01/2024



Comhairle Cathrach
Bhaile Átha Cliath
Dublin City Council

Next Steps:

- The map and data fields are being updated-work ongoing internally in DCC and regular meetings with LGMA
- Accurate reporting will be possible once this work is complete
 - Could be provided as part of quarterly Housing Reports
- Note: Data set is owned and operated by LGMA-discussions to make this publicly accessible are required

